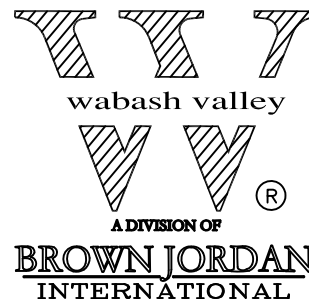


model no:

SG150D, SG150P

SIGNATURE SERIES

46" ROUND TABLE W/CONCAVE SEATS
EXPANDED METAL & PERFORATED PATTERN
PORTABLE



© Wabash Valley Manufacturing, Inc.

customer service:

ASSEMBLERS: If you find any parts missing or damaged, or if you're having difficulty assembling your furniture/equipment, call us at:

* Before calling, have your product model number available.

1-800-253-8619 (Inside U.S.A.)

260-352-2102 (Outside U.S.A.)

Monday thru Friday,
8:00 AM - 4:30 PM Eastern Time
(EXCEPT HOLIDAYS)

Any correspondence concerning our product should be sent directly to our Customer Service Manager at:

Wabash Valley Manufacturing, Inc.
505 E. Main Street
P.O.Box 5
Silver Lake, IN 46982 U.S.A.
FAX: 260-352-2160

maintenance:

Regular inspection and maintenance of all parts, and fasteners is necessary. Tighten all bolts and nuts. Inspect Tops, Seats, Legs, Braces and Fasteners periodically for wear or vandalism. Replace broken or worn parts immediately or take equipment out of service until repairs are made. Use genuine Wabash Valley replacement parts.

To restore plastisol coating to its luster after prolonged use, wash/rinse/dry and use Armor-All ® or similar quality vinyl protectant.

KEEP THIS ASSEMBLY/SPECIFICATION SHEET FOR FUTURE REFERENCE.

specifications:

NOTE: We reserve the right to change specifications without notice.

Heat fused poly-vinyl coating, finished on inner-metal structure, to an approximate 3/16" thickness. Framework assemblies are finished with powder coating; electrostatically applied and oven cured according to powder manufacturer's specifications. Fasteners are stainless steel to resist corrosion.

TABLE FRAME:

Main supports are constructed of 1 5/8" od x 14 gage galvanized structural steel tubing. Mounting brackets, on legs, are 1/4" x 1 1/2" steel flat bar. Cross brace is 1" od x 15 gage galvanized structural steel tubing.

TOP & SEAT:

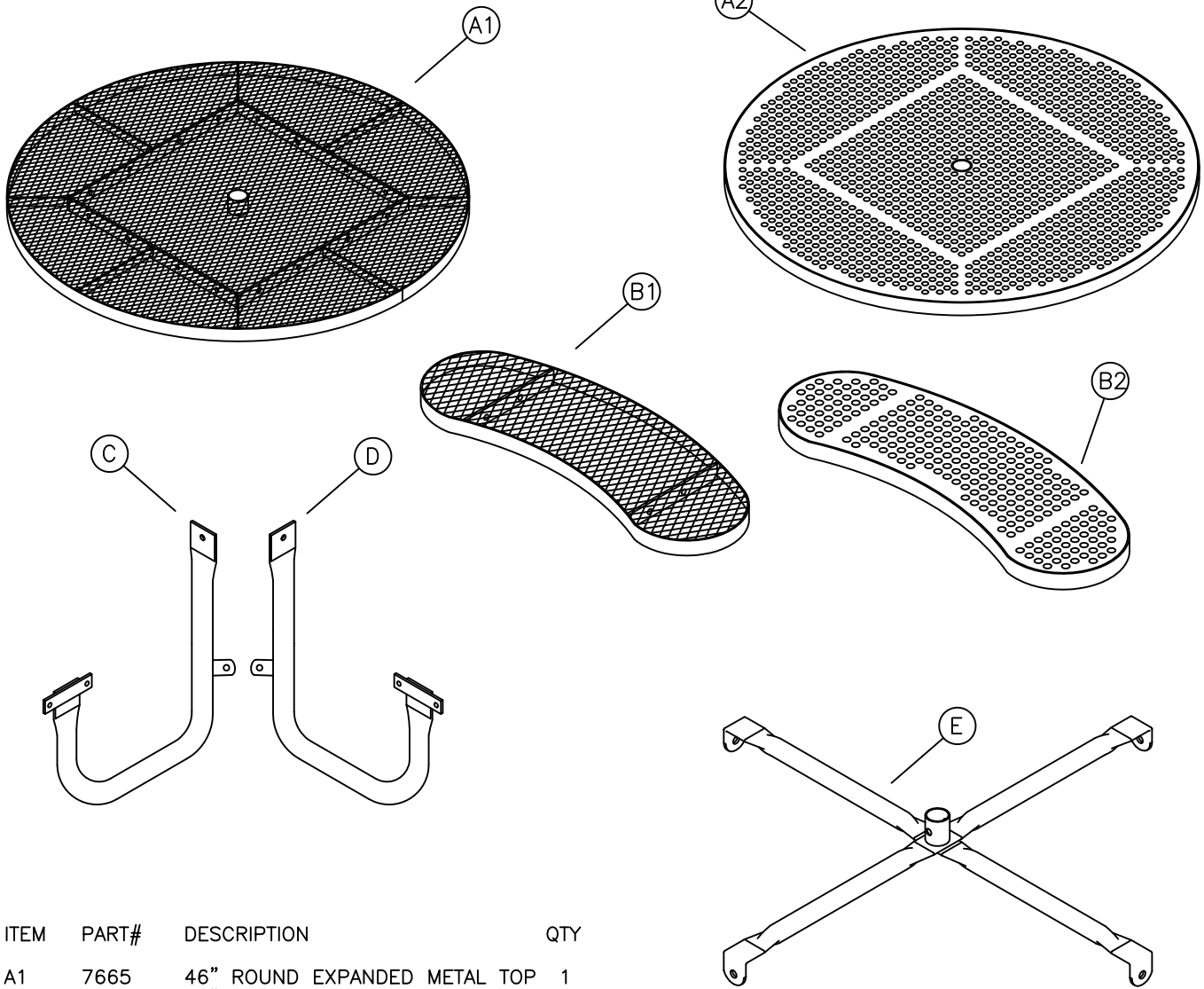
Expanded metal top and seats use fabricated 3/4" #9 expanded steel mesh. Perforated top and seats are made of 12 gage sheet metal. The top and seats framing is 1/8" x 1 1/2" strip steel. Top and seat mounting brackets are 1/4" x 1 1/2" steel flat bar. The top's support braces are 1/8" x 1" strip steel.

GENERAL:

Ground space requirements are 78 9/16" squared. The table top is 46 3/8" diameter and 29 3/16" to the top of the table. The seat is 10 3/8" wide x 34 1/2" long and 19 11/16" to the top of the seat.

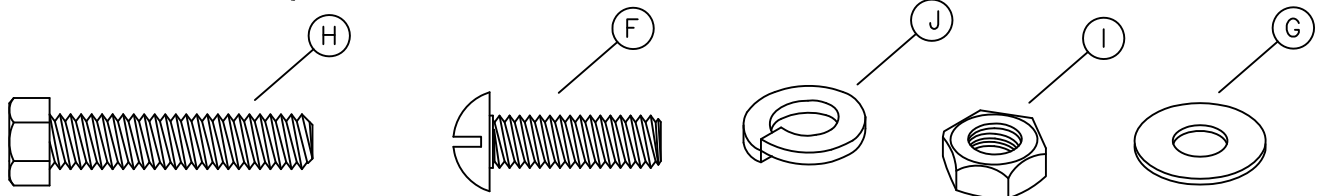
NOTE: When Umbrellas are used on Tables, the Umbrellas must be secured.
Wabash Valley Umbrellas include an Umbrella Collar for securing.

parts identification:



| ITEM | PART# | DESCRIPTION | QTY |
|------|-------|------------------------------|-----|
| A1 | 7665 | 46" ROUND EXPANDED METAL TOP | 1 |
| A2 | 7976 | 46" ROUND PERFORATED TOP | 1 |
| B1 | 7666 | CONCAVE EXPANDED METAL SEAT | 4 |
| B2 | 8000 | CONCAVE PERFORATED SEAT | 4 |
| C | 7326 | 46" RIGHT LEG | 4 |
| D | 7327 | 46" LEFT LEG | 4 |
| E | 7381 | 46" CROSS BRACE | 1 |

hardware identification:



ITEMS INCLUDED IN HARDWARE PACK

#21022

| ITEM | PART# | DESCRIPTION | QTY |
|------|-------|--|-----|
| F | 17088 | 5/16-18 x 1" TRUSS HEAD MACHINE SCREW - SS | 4 |
| G | 17028 | 3/8" FLAT WASHER - SS | 56 |
| H | 17011 | 5/16-18 x 1 1/2" HEX HEAD BOLT - SS | 24 |
| I | 17032 | 5/16-18 HEX FINISH NUT - SS | 28 |
| J | 17050 | 5/16" SPLIT LOCK WASHER - SS | 28 |

ASSEMBLY TOOLS REQUIRED

- 2 - 1/2" WRENCHES
- 1 - 3' OR 6' LEVEL
- 1 - REGULAR TIP SCREWDRIVER

assembly procedures:

IMPORTANT: Assemblers should be reasonably skilled in the assembly of commercial grade/heavy duty fabricated steel equipment.

To ensure proper assembly, it is suggested that you take adequate time to locate and identify each part. To prevent scratching of the finished pieces, we recommend this unit to be assembled on a clean, flat, solid, surface with a drop cloth, allowing plenty of working room. Also please read the instructions and study the sketches very carefully. A little extra time spent before assembly will be well worth it in performing a complete, proper assembly. Please note that all parts have been pre-cut and pre-drilled.

During the assembly process leave all bolts and nuts "finger tight", until the entire unit is completely assembled. This allows room for movement to level or adjust all seats, tops, benches, framework and braces if necessary. After final adjustment and leveling, permanently tighten all nuts, bolts and fasteners.

7L

STEP 1

Invert the top so it's upside down on a flat surface. Attach a right (C) and left (D) leg to an outside corner of the top's center square mounting frame, see FIG. 1. Secure the top end of the legs to the outside of the top's center square mounting frame, using one, per leg, (H) and (I) using two (G) and one (J) per (H).

NOTE: The tabs on each leg should meet at each corner when installing the legs. Temporarily insert one (F), (I), (J) and two (G) loosely into the tab holes of each leg. This allows the legs to secure and hold each other in place at each corner.

Repeat Step 1, until each leg is properly attached in all four corners of the top's center square mounting frame.

STEP 2

Attach all four ends of the (E) cross brace, where the tabs of each leg meet. Use the bolts you temporarily secured to hold each leg together, see FIG. 2.

NOTE: Before attaching the cross brace, make sure the round cylinder at the center of the cross brace is pointing downward toward the bottom side of the top.

STEP 3

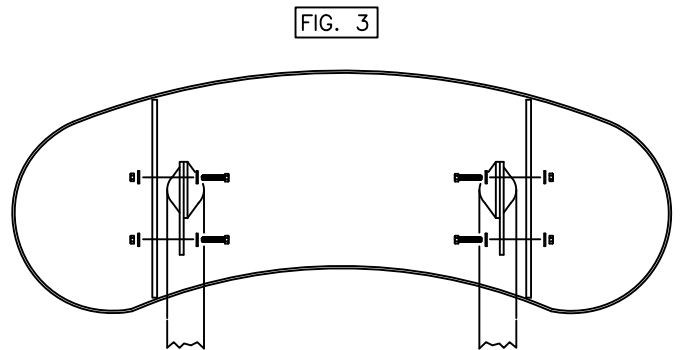
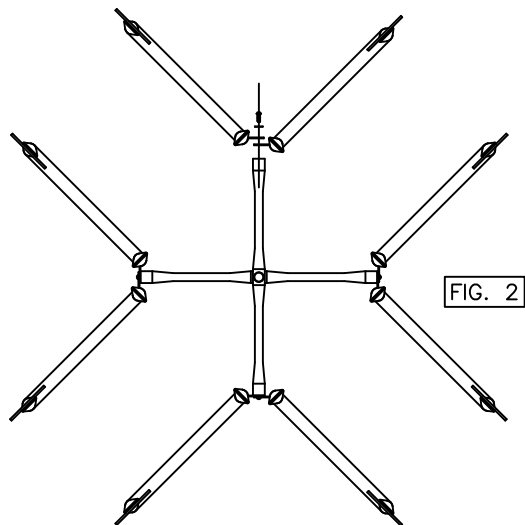
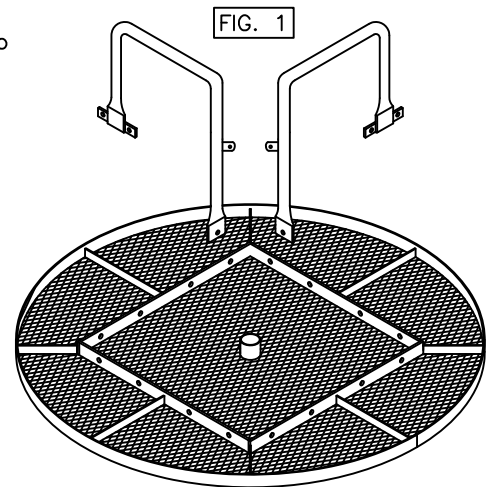
Check all fasteners making sure each fastener is finger tight and properly supporting the unit. Re invert the table to its top side up position.

STEP 4

Attach each (B-) seat to the seat end of each leg, making sure the seat's mounting brackets fit to the outside of the leg's seat end mounting brackets, see FIG. 3. Secure the seats using two, per each mounting bracket, (H), and (I) using two (G) and one (J) per (H).

STEP 5

Level the seats and top if necessary and tighten all fasteners with wrenches.



installation:

WARNING: The proper installation for Wabash Valley products may depend upon many factors unique to the site, location, or use of a particular product. Consult with your contractor or other professional to determine your specific installation requirements.

assembly procedures, cont'd:

product dimensions:

