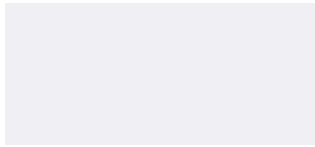




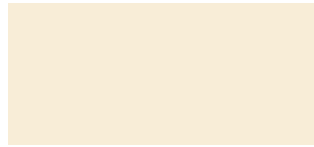
# COLOR FINISHES

## Aerohot®, AeroServ™, Econo Mate™ & Thurmaduke™ Standard Powder Coat Paint Colors

You must specify your choice of available colors when ordering.



#217105 - Bright White



#217103 - Natural Almond



#217150 - Orange



#217154 - Racing Red



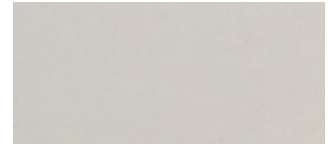
#217107 - Hollyberry Red



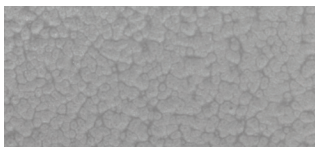
#217120 - Sky Blue



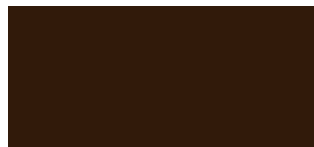
#217127 - Fence Green



#217152 - Stone Gray



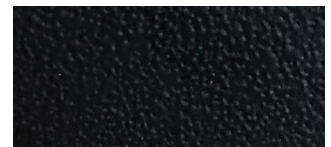
#217102 - Silver Hammer



#217113 - Brown Kickplate



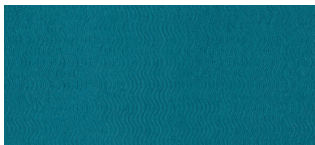
#217101 - Semi-Gloss Black



#217125 - Textured Black

## Heritage™ Buffet Unit Color and Finish Selections

You must specify your choice of available finishes for both the Heritage Buffet Unit and optional Food Shields and Trayslides when ordering by adding the appropriate finish/color suffix number to the product model number.



Blue Agave -  
*WilsonArt 4919-60*



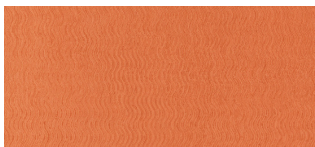
Forged Steel -  
*WilsonArt 4995-60*



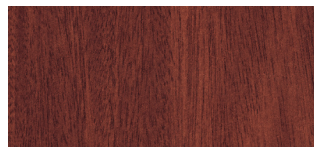
Oxide -  
*WilsonArt 1787-60*



Windswept Pewter -  
*WilsonArt 4795-60*



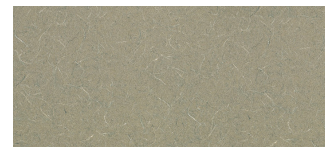
Tangerine -  
*WilsonArt 4915-60*



Acajou Mahogany -  
*Formica 7008-58*

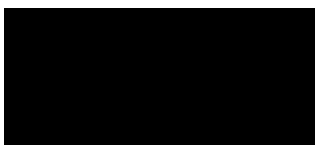


Amber Maple -  
*Formica 7015-58*



Green Tigris -  
*WilsonArt 4667-60*

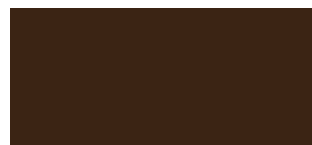
## Food Shield Colors



HB-10 Black Matte



HB-20 Copper



HB-30 Brown

## Actual Colors May Vary

The colors above were matched to the actual product colors and finishes in bright daylight. Discrepancies between paper and metal may cause slight variances. Duke will do everything in our power to assure consistency and accuracy.

For actual finish samples, please contact Duke's St. Louis office by calling 1-800-735-3853.