



BEVERAGE-AIR

Project: _____	AIA#
Item: _____	
Location: _____	SIS#
Approved: _____	

OPEN-AIR MERCHANDISER

VMHC-7 Open-Air Merchandiser
Hydrocarbon Series

MODEL:
VMHC-7-1-B



3 Year Parts/Labor Warranty
Additional 4 Year Compressor Warranty

CABINET CONSTRUCTION

- Black vinyl wrapped exterior
- Interior is painted steel for easy cleaning
- Electronic temperature control
- LowE double-pane glass tempered thermal sides
- Foamed in place CFC free polyurethane insulation enhances the structural strength of the cabinet and helps increase energy efficiency
- Shelves included can be installed in 2 positions for display flexibility
- Price tag molding
- 6" Adjustable legs
- Night curtain comes standard and helps save energy and maintain cabinet temperature.
- Operating temperature 36°F - 40°F
- Intended for use in rooms having ambient condition or 75°F/55% humidity
- LED lighting standard
- Certified for bottled beverages and packaged food product

OPTIONS & ACCESSORIES

- Front display merchandiser
- Side saddle merchandiser
- WonderBar/peg bar merchandiser
- 3" Casters
- 5" Casters
- Reach-in curtains
- Security cage w/lock

REFRIGERATION SYSTEM

- R290 refrigerant
- Maintenance free condenser slides out for easy service
- Automatic defrost

VMHC-7 OPEN-AIR MERCHANDISER



Please verify qualifying units by visiting:
www.energystar.gov/cfs

3779 Champion Blvd., Winston-Salem, NC 27105
1-888-845-9800 Fax: 1-336-245-6453
Beverage-Air.com Sales@bevair.com

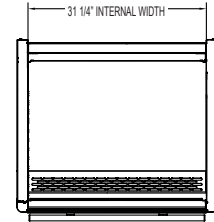


BEVERAGE-AIR

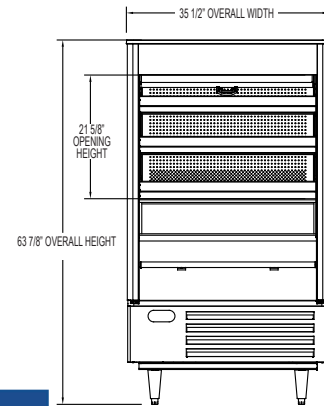
MODEL	VMHC-7-1-B
EXTERNAL DIMENSIONAL DATA	
Width Overall	35 1/2"
Depth Overall	31 3/4"
Height Overall	63 7/8"
INTERNAL DIMENSIONAL DATA	
NET Capacity (cubic ft.)	8.0
Internal Width Overall (in)	31 1/4"
Internal Depth Overall (in)	21 3/4"
Internal Height Overall (in)	40"
Number of Shelves	3
ELECTRICAL DATA	
Full Load Amperes 115/60/1	10.0
REFRIGERATION DATA	
Horsepower*	1/3
Capacity (BTU/Hr)*	3000
SHIPPING DATA	
Gross Weight (crated lbs)	423 lbs
Height - Crated	63"
Width - Crated	39"
Depth - Crated	36 1/8"

Open-Air Merchandiser Refrigerator Model: VMHC-7-1-B

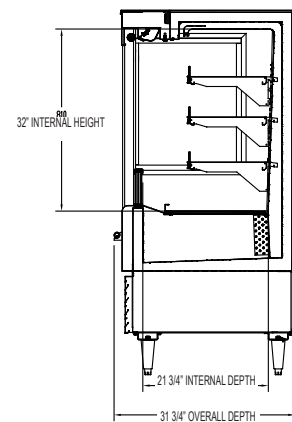
Model Views



PLAN VIEW



ELEVATION VIEW



SIDE VIEW



*ELECTRICAL CONNECTION



115/60/1
NEMA 5-15P

Units pre-wired at factory and include 8' long cord and plug set.