



"FBLG" Stainless Steel Top Work Tables

BUDGET SERIES - -BUDGET SERIES - -BUDGET SERIES - -BUDGET SERIES - -

w/ 18 Gauge Stainless Steel Work Top

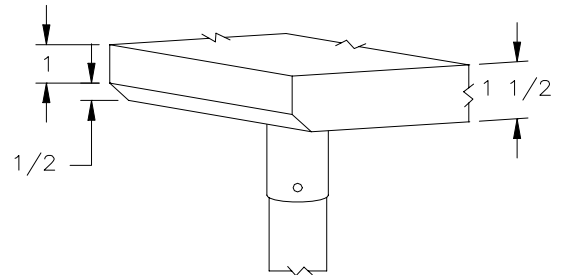
w/ Galvanized Base and Undershef



**18 GAUGE TOP w/
GALVANIZED LEGS
& UNDERSHELF**

24"WIDE	Qty	30"WIDE	Qty
FBLG2424		--	
FBLG3024		FBLG3030	
FBLG3624		FBLG3630	
FBLG4824		FBLG4830	
FBLG6024		FBLG6030	
FBLG7224		FBLG7230	
FBLG8424		FBLG8430	
FBLG9624		FBLG9630	

Note: FBLG" standard w/stallion edge front and rear. For 1 1/2" backsplash, use prefix "U" I.E. UFBLGO69, same price.



STALLION
SAFETY
EDGE

FEATURES:

- * 18 Gauge Stainless Steel Top
Type 430 stainless steel mechanically polished, satin finish
- * Top is Sound Deadened
- * 1 1/2" Stallion Edge on front and rear with side edges 90 degree bend down for table line-up
- * Galvanized Base and Undershef
- * Undershef is adjustable to desired height
- * Adjustable bullet feet
- * Shipped knocked-down, easy - to - assemble
- * All models are approved by the National Sanitation Foundation and the U.S. Department of Agriculture.

CONSTRUCTION:

Top: Stainless Steel Tops are TIG welded, Exposed welds are polished to match adjacent surface.

MATERIAL:

- Top: 18 gauge stainless steel
Type 430 stainless steel mechanically polished, satin finish
- Shelf: 18 gauge Galvanized Steel
- Legs: 1 5/8" Round O.D., 16 gauge tubular galvanized steel
- Gussets: Galvanized Steel
- Feet: 1" adjustable plastic bullet feet

OPTIONAL ACCESSORIES

	MODEL #	Qty
REAR 1-1/2" BACKSPASH		

John Boos & Co

315 South First Street - Effingham, IL 62401

Phone: 217-347-7701 - Fax: 217-347-7705

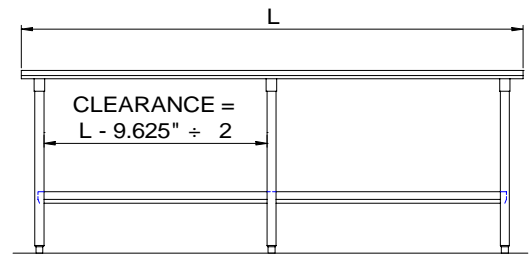
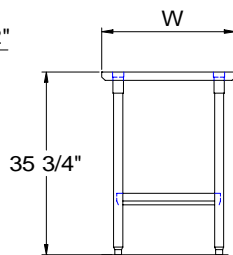
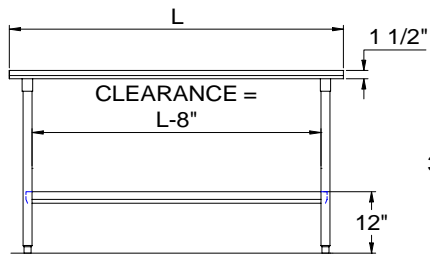
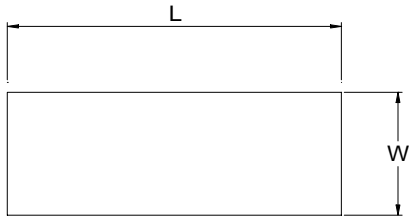
Email: sales@johnboos.com - Web-site: www. johnboos.com

Find this product at:



1-866-285-1252

DETAILED SPECIFICATIONS



All units ship unassembled for reduced shipping cost.
 Units 7 ft. and larger are furnished with six legs.
 All dimensions are typical.
 Tolerance +/- .500\".

Finished size of undershelf.
 Shelf length = length minus 4.875"
 Shelf width = width minus 4.25\".

18 GAUGE TOP w/ GALVANIZED LEGS & UNDERSHELF

L	24" WIDE	WT.	30" WIDE	WT.
24	FBLG2424	40	--	59
30	FBLG3024	45	FBLG3030	50
36	FBLG3624	50	FBLG3630	56
48	FBLG4824	61	FBLG4830	69
60	FBLG6024	71	FBLG6030	82
72	FBLG7224	83	FBLG7230	94
84	FBLG8424	103	FBLG8430	126
96	FBLG9624	111	FBLG9630	128

John Boos & Co

315 South First - Effingham, IL 62401 Phone: 217-347-7701 - Fax: 217-347-7705
 Email: sales@johnboos.com - Web-site: www.johnboos.com



May 2002

John Boos is constantly engaged in a program of improving products and therefore reserves the right to change specification without prior notice