

Model: \_\_\_\_\_

Item #: \_\_\_\_\_ Quantity: \_\_\_\_\_

Project: \_\_\_\_\_



- **Drainboard:**  
20 gauge embossed stainless steel reinforced with welded braces every six inches. 3/4" radius on all vertical and horizontal edges.
- **Front Apron:**  
20 gauge stainless steel clad over 20 gauge galvanized.
- **Backsplash:**  
22 gauge stainless steel.
- **Sides:**  
20 gauge stainless steel.
- **Middle Shelf:**  
20 gauge stainless steel.
- **Back:**  
20 gauge galvanized.
- **Bottom:**  
20 gauge stainless steel.
- **Legs:**  
1 5/8" tubular 16 gauge galvanized steel with grey plastic bullet foot.
- **Plumbing:**  
1" IPS drain connection.

### Accessories

- Stainless Steel Legs
- Side Splash

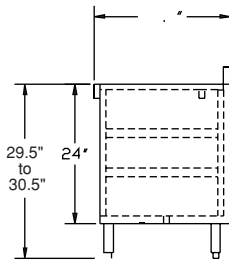
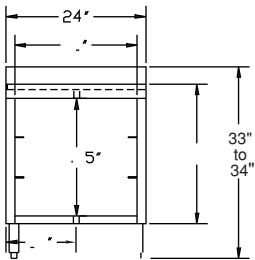
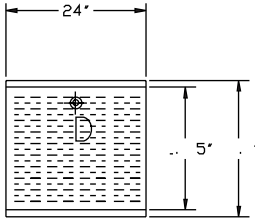
Approved By: \_\_\_\_\_

Model: \_\_\_\_\_ Item #: \_\_\_\_\_ Quantity: \_\_\_\_\_ Project: \_\_\_\_\_

### 1800 Series

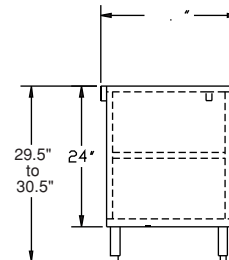
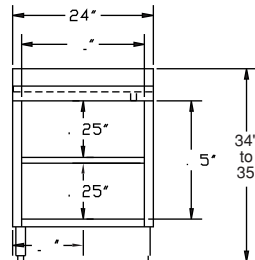
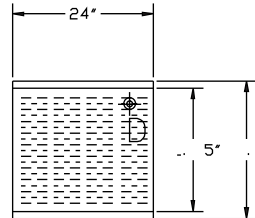
#### Three Rack Slides

Model Numbers	Length	Top	Weight lbs. Slides
18-GSB1	2'-0"	DRBD	35



#### Solid Shelf

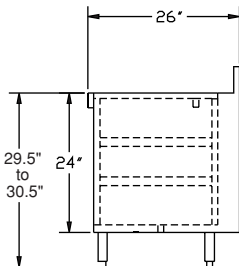
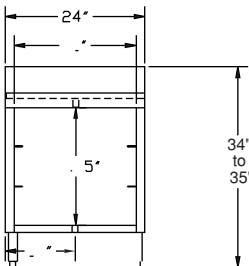
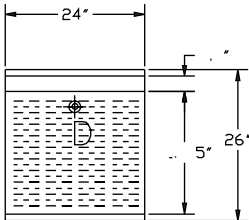
Model Numbers	Length	Top	Weight lbs.
18-GSB3	2'-0"	DRBD	35



### 2100 Series

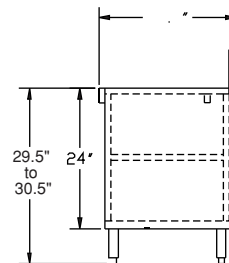
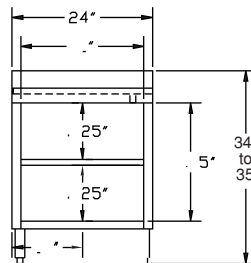
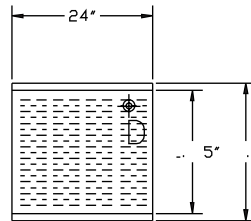
#### Three Rack Slides

Model Numbers	Length	Top	Weight lbs. Slides
21-GSB1	2'-0"	DRBD	35



#### Solid Shelf

Model Numbers	Length	Top	Weight lbs.
21-GSB3	2'-0"	DRBD	35



**Mechanical Requirements:**  
1" IPS drain connection

Approved By: \_\_\_\_\_

Due to our commitment to continued product improvement, specifications are subject to change without notice.