



# ROYAL SERIES UNDERBAR STORAGE CABINETS

MODEL: \_\_\_\_\_ PROJECT: \_\_\_\_\_ ITEM #: \_\_\_\_\_ QTY: \_\_\_\_\_

## PRODUCT IMAGES



KR18-S24 SHOWN



KR18-SD24 SHOWN

## STANDARD FEATURES

- **Drainboard**  
20 gauge embossed stainless steel reinforced with welded braces every 6" . 3/4" radius on all vertical and horizontal edges
- **Front Apron**  
20 gauge stainless steel
- **Backsplash**  
20 gauge stainless steel
- **Sides**  
20 gauge stainless steel
- **Back and Bottom**  
20 gauge stainless steel
- **Doors (Optional)**  
20 gauge stainless steel
- **Legs**  
1 5/8" tubular 16 gauge stainless steel with grey plastic bullet foot
- **Plumbing**  
1" IPS drain connection

## AVAILABLE IN 1800 or 2100 SERIES

## OPTIONAL ACCESSORIES

- **KR-SS**      Stainless Steel Middle Shelf for Cabinet
- **KR-310**    Right End Splash
- **KR-311**    Left End Splash



### APPROVED BY:

### CERTIFICATIONS:

Due to our commitment to continued product improvement, specifications are subject to change without notice.

Printed in the USA

**Krowne Metal Corporation**

100 Haul Rd. Wayne, NJ 07470 • Toll Free: (800) 631-0442 • Fax: (973) 872-1129  
sales@krowne.com • www.krowne.com • www.facebook.com/KrowneMetal • www.twitter.com/KrowneMetal

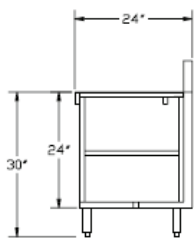
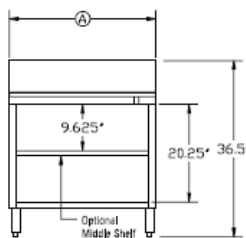
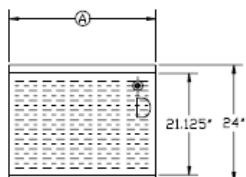
Rev. 08/2015  
No. 5.23



# ROYAL SERIES UNDERBAR STORAGE CABINETS

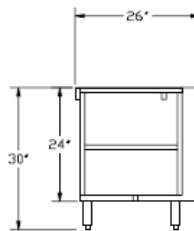
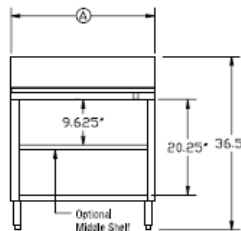
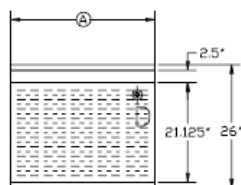
MODEL: \_\_\_\_\_ PROJECT: \_\_\_\_\_ ITEM #: \_\_\_\_\_ QTY: \_\_\_\_\_

## 1800 SERIES



| Model Numbers | Overall Length<br>Ⓐ | Doors | Weight<br>(lbs.) |
|---------------|---------------------|-------|------------------|
| KR18-S12      | 1'-0"               | N/A   | 50               |
| KR18-SD12     | 1'-0"               | 1     | 60               |
| KR18-S18      | 1'-6"               | N/A   | 65               |
| KR18-SD18     | 1'-6"               | 1     | 75               |
| KR18-S24      | 2'-0"               | N/A   | 100              |
| KR18-SD24     | 2'-0"               | 1     | 115              |
| KR18-S30      | 2'-6"               | N/A   | 100              |
| KR18-SD30     | 2'-6"               | 2     | 130              |
| KR18-S36      | 3'-0"               | N/A   | 140              |
| KR18-SD36     | 3'-0"               | 2     | 160              |
| KR18-S48      | 4'-0"               | N/A   | 150              |
| KR18-SD48     | 4'-0"               | 2     | 170              |

## 2100 SERIES



| Model Numbers | Overall Length<br>Ⓐ | Doors | Weight<br>(lbs.) |
|---------------|---------------------|-------|------------------|
| KR21-S12      | 1'-0"               | N/A   | 50               |
| KR21-SD12     | 1'-0"               | 1     | 60               |
| KR21-S18      | 1'-6"               | N/A   | 65               |
| KR21-SD18     | 1'-6"               | 1     | 75               |
| KR21-S24      | 2'-0"               | N/A   | 100              |
| KR21-SD24     | 2'-0"               | 1     | 115              |
| KR21-S30      | 2'-6"               | N/A   | 100              |
| KR21-SD30     | 2'-6"               | 2     | 130              |
| KR21-S36      | 3'-0"               | N/A   | 140              |
| KR21-SD36     | 3'-0"               | 2     | 160              |
| KR21-S48      | 4'-0"               | N/A   | 150              |
| KR21-SD48     | 4'-0"               | 2     | 170              |

MECHANICAL REQUIREMENTS: 1" IPS drain connection.



**APPROVED BY:**

**CERTIFICATIONS:**

Due to our commitment to continued product improvement, specifications are subject to change without notice.