

SmartWAVE® Low Profile Wide Base Coffee Brewer

ITEM#

PROJECT

DATE



Model WAVE-APS
with 2.5L lever-action Airpot
(airpot sold separately)

Dimensions: 16.94-18.69" H x 9.71 W x 17.24"D
(43cm H x 22.2cm W x 43.8cm D)



Model WAVE-S-APS
with Deluxe 1.9L Thermal Carafe
(thermal carafe sold separately)

Dimensions: 16.94-18.69" H x 9.71 W x 17.24"D
(43cm H x 22.2cm W x 43.8cm D)

Features

Low Profile Wide Base Coffee Brewer

Low-profile brewer featuring SmartWAVE technology, simple operation, and flexible server options

- SmartWAVE technology increases turbulence in the brew funnel.
- Brews 3.9 to 6.4 gallons (14.8 to 24.2 litres) of perfect coffee per hour.
- Brew into 1.9L thermal carafe using the slide-out booster tray.
- Adjustable legs to accommodate up to 3.0L* lever action and 2.5L push button BUNN airpots and thermal servers (refer to usage table on back).
- Airpots, carafes and thermal servers keep coffee hot and are easily transported.
- Ensures coffee brew quality with cold brew lock out capability.
- SplashGard® funnel deflects hot liquids away from the hand.
- Energy-saver mode reduces tank temperature during idle periods.

Standard Version

- Four-digit LED read-out for simple programming.
- Utilize the same LED read-out for brewer status (Ready, Heating, Brewing).
- BrewMETER® and pulse brew routines to adjust flavor profile corresponding with the BrewMETER (1-14).

Silver Version

- Analog switches accompanied by red/green LED for programming.
- Red/green LED provide brewer status (ready, heating, brewing).
- Choice of three pulse brew routines to adjust your flavor profile.

*Recommended batch size: 2.5 L or less

For current specification sheets and other information, go to www.bunn.com.

Related Products

Easy Clear® EQ-17-TL

Product No. : 30200.1000

Dimensions:

12⁷/₁₆" H x 2¹/₂" W x 3" D
31.6 cm H x 6.35 cm W x 7.62 cm D



Easy Clear® ED-17-TL

Product No. : 30201.1001

Dimensions: 8¹/₄" H x 2⁵/₁₆" Dia.
20.95 cm H x 5.87 cm Dia.

Paper Filter Pack

Product No. : 20115.0000

Packed per case: 1,000

Dimensions: 4¹/₄" Base x 2³/₄" Sidewall
10.8 cm Base x 6.98 cm Sidewall



2.2 litre Push-Button Airpot

Product No. : 28696.0002

Capacity: 74 oz. (2.19 L)



2.5 litre Push-Button Airpot

Product No. : 13041.0001

Capacity: 84 oz. (2.48 L)

2.5 litre Lever-Action Airpot

Product No. : 32125.0000

Capacity: 84 oz. (2.48 L)

3.0 litre Lever-Action Airpot

Product No. : 32130.0000

Capacity: 102 oz. (3.0 L)



Deluxe 1.9 litre Carafe

Product No. : 36029.0001

Capacity: 64 oz. (1.9 L)



Economy 1.9 litre Carafe

Product No. : 40163.0000

Capacity: 64 oz. (1.9 L)



1.9 litre Thermal Pitcher

Product No. : 39430.0000

Capacity: 64 oz. (1.9 L)



2.5 litre Thermal Server

Product No. : 23300.0010

Capacity: 84 oz. (2.48 L)



Model

WAVE15-APS, WAVE15-S-APS
WAVE-APS, WAVE-S-APS

Agency Listing



Dimensions & Specifications

Model	Product #	Volts	Amps	Tank Heater Watts	Total Watts	Brewing Capacity	Cu. Ft.	Shipping Weight	Cord Attached
WAVE15-APS	39900.0005	120	11.3	1320	1350	3.9 gal./hr.	2.5	24.2 lbs.	Yes
WAVE15-S-APS	39900.0006	120	11.3	1320	1350	3.9 gal./hr.	2.5	24.2 lbs.	Yes
WAVE-APS	39900.0008	120/240	9.4	2202	2250	6.4 gal./hr.	2.5	24.2 lbs.	No
WAVE-S-APS	39900.0009	120/240	9.4	2202	2250	6.4 gal./hr.	2.5	24.2 lbs.	No


Brewing capacity: based upon incoming water temp of 60°F (140°F rise) per 1/2 gallon brew time of 4 minutes.

Electrical: 120V, requires 2-wires plus ground service rated 120V, single phase, 60 Hz.

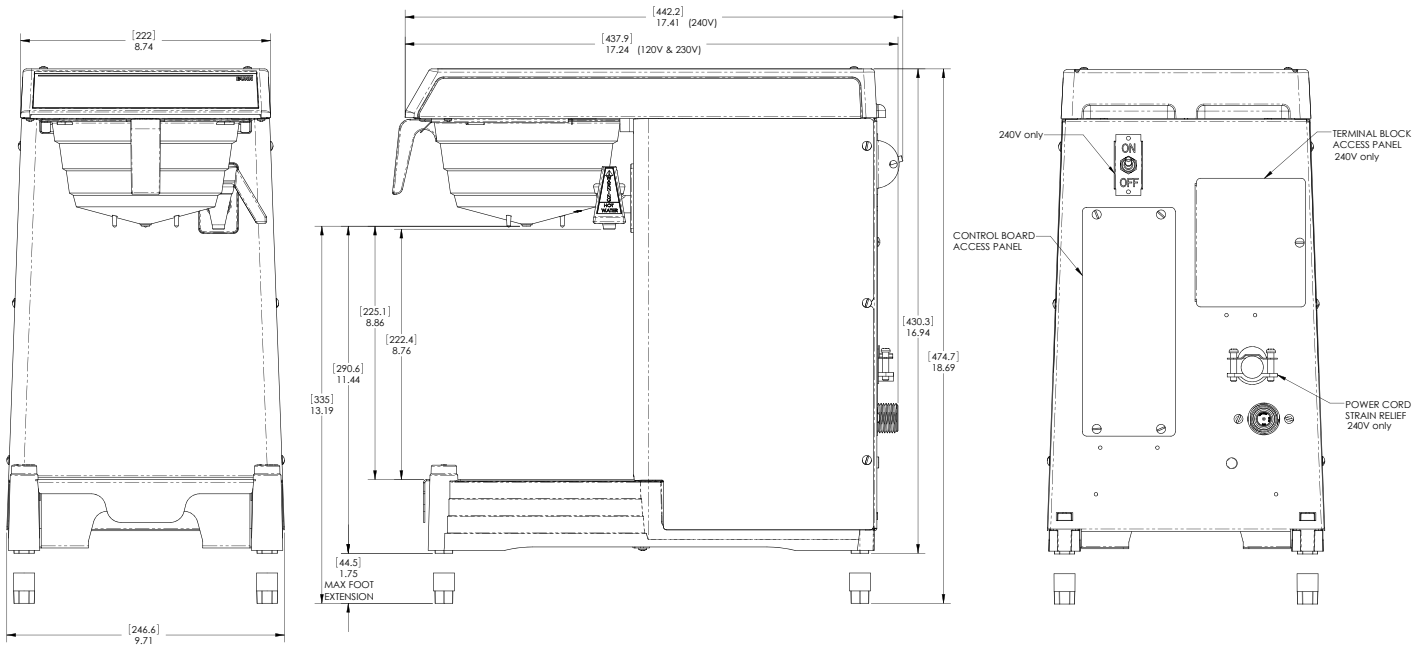
120/240V, requires 3-wires plus ground service rated 120/240V, single phase, 60 Hz.

Plumbing: 20-90 psi (138-621 kPa). Supplied with 1/4" male flare fitting. Tank Capacity: 155 oz. (4.58 L)

Airpot/Carafe/Pitcher/Thermal Server Usage Table

	Brewer Position	BUNN Part #	Description	Brewer Height	Approximate Adjustment
 <p>Legs extended to accommodate 2.5L push-button airpot</p>	Using thermal carafe tray	36029.0001	1.9L deluxe thermal carafe	16.9"	N/A
	Using thermal carafe tray	40163.0000	1.9L economy thermal carafe	16.9"	N/A
	LP feature (Lowest)	39430.0000	1.9L thermal pitcher	16.9"	N/A
	LP feature (Lowest)	32125.0000	2.5L lever-action airpot	16.9"	N/A
	Extend legs	32130.0000	*3.0L lever-action airpot	17.5"	.6"
	Extend legs	28696.0002	2.2L push-button airpot	18"	1"
	Extend legs	13041.0001	2.5L push-button airpot	18.5"	1.5"
	Extend legs	23300.0010	2.5L thermal server	18.5"	1.5"

*Recommended batch size: 2.5 liters or less



Bunn-O-Matic® Corporation - 1400 Stevenson Drive Springfield, Illinois 62703 • 800-637-8606 • 217-529-6601 • Fax 217-529-6644 • www.bunn.com

BUNN® practices continuous product research and improvement. We reserve the right to change specifications and product design without notice. Such revisions do not entitle the buyer to corresponding changes, improvements, additions or replacements for previously purchased equipment.

All dimensions shown in inches.

4/09 © Bunn-O-Matic Corporation