



BEVERAGE-AIR

| | |
|-----------------|------|
| Project: _____ | AIA# |
| Item: _____ | |
| Location: _____ | SIS# |
| Approved: _____ | |

BB BACK BAR EQUIPMENT

BB48HC Sliding Glass Door, Food Rated, Pass-Thru & Stainless Steel Top
Hydrocarbon Series

MODELS:

BB48HC-1-GS-F-PT-B-27
BB48HC-1-GS-F-PT-S-27

BB48HC Back Bar Refrigerators: Pass-Thru Series

3 Year Parts/Labor Warranty
Additional 2 Year Compressor Warranty



BB48HC-1-GS-F-PT-S-27

CABINET CONSTRUCTION

- Black or stainless steel exterior
- Interior construction utilizes galvanized steel on walls and ceiling, heavy duty stainless steel floor
- Full electronic control
- 2" Stainless steel top
- Two (2) epoxy coated shelves per section, standard
- Self-closing doors
- Stay-open feature & lock standard
- LED lighting
- Certified for open food product

OPTIONS & ACCESSORIES

- 3"-6" casters or 6" legs
- Wine model (40°-60° models)
- Wine racks
- Underbar models available
- Foot pedal door opener

REFRIGERATION SYSTEM

- Refrigeration system uses R290 refrigerant to comply with all environmental concerns
- Balanced forced-air refrigeration system provides rapid chilling of product
- Automatic, non-electric evaporator
- Epoxy coated evaporator coil



3779 Champion Blvd., Winston-Salem, NC 27105
1-888-845-9800 Fax: 1-336-245-6453
Beverage-Air.com sales@bevair.com

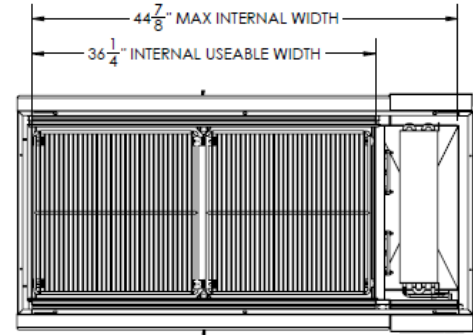


BEVERAGE-AIR

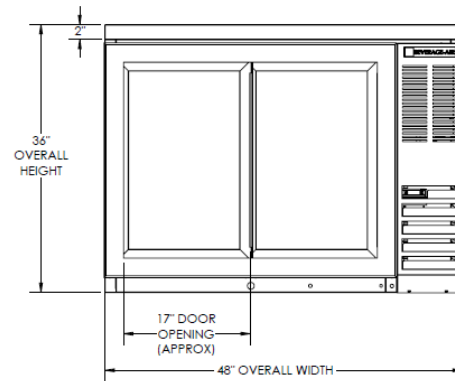
Bar Equipment—Sliding Glass Door Food Rated Pass-Thru with Stainless Steel Top Models: BB48HC-1-GS-F-PT-B-27, BB48HC-1-GS-F-PT-S-27

| MODEL | BB48HC-1-GS-F-PT-B-27 | BB48HC-1-GS-F-PT-S-27 |
|----------------------------------|-----------------------|-----------------------|
| EXTERNAL DIMENSIONAL DATA | | |
| Width Overall | 48" | 48" |
| Depth Overall with Handles | 25 1/2" | 25 1/2" |
| Height Overall | 36" | 36" |
| Number of Doors | 4 | 4 |
| Door Opening (in) | 17" x 26 1/4" | 17" x 26 1/4" |
| Shelf Area (sq. in.) | 307 3/64 | 307 3/64 |
| INTERNAL DIMENSIONAL DATA | | |
| NET Capacity (cubic ft.) | 13.6 | 13.6 |
| Internal Width Overall (in) | 36 1/4" | 36 1/4" |
| Internal Depth Overall (in) | 18" | 18" |
| Internal Height Overall (in) | 28" | 28" |
| Number of Shelves | 4 | 4 |
| Number of Kegs | 2 | 2 |
| ELECTRICAL DATA | | |
| Full Load Amperes 115/60/1 | 3 | 3 |
| REFRIGERATION DATA | | |
| Horsepower | 1/3 | 1/3 |
| Capacity (BTU/Hr)* | 1942 | 1942 |
| WEIGHT DATA | | |
| Gross Weight (Crated lbs) | 316 lbs | 316 lbs |
| Height - Crated | 43" | 43" |
| Width - Crated | 51" | 51" |
| Depth - Crated | 27" | 27" |

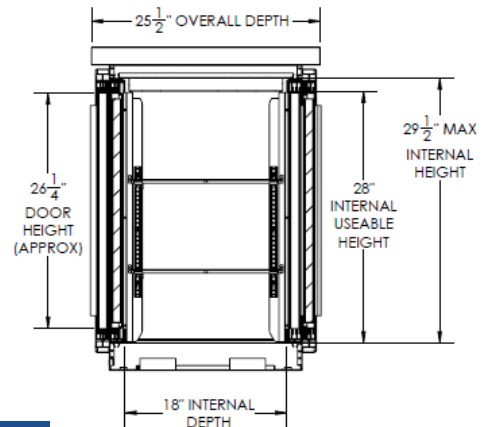
Model Views



Plan View



Elevation View



Side View

ELECTRICAL CONNECTION



115/60/1
NEMA-5-15P

Units pre-wired at factory and include 8' long cord and plug set.



an Ali Group Company



The Spirit of Excellence

3779 Champion Blvd., Winston-Salem, NC 27105
1-888-845-9800 Fax: 1-336-245-6453